

---

UNIVERSITI SAINS MALAYSIA

Second Semester Examination  
Academic Session 2007/2008

April 2008

**RDG 333 – Rekabentuk Dalaman  
(Interior Design)**

Masa: 3 jam  
(Duration: 3 hours)

---

Sila pastikan bahawa kertas peperiksaan ini mengandungi **LIMA** muka surat yang tercetak sebelum anda memulakan peperiksaan ini.

*Please check that this examination paper consists of **FIVE** printed pages before you begin the examination.*

Jawab **SOALAN NO. 1** yang diwajibkan dan mana-mana **TIGA** soalan lain.

*Answer **QUESTION 1**, which is compulsory, and **THREE** other questions.*

1. Berdasarkan **Rajah 1**, buat lakaran berskala dan rancangkan pelan tatatur ruang bilik mesyuarat bagi memuatkan lapan orang berkeluasan 345 kaki persegi (33 meter persegi) termasuk keperluan berikut:
- (a) Pintu papan kembang bujang
  - (b) Dinding sekatan
  - (c) Almari alat pandang dengar serta ruang menyimpan alatan berkaitan
  - (d) Papan tulis pen
  - (e) Meja sorong untuk hidangan minuman
  - (f) Suis elektrik diatas permukaan meja

Lengkapkan lakaran dengan keterangan ringkas spesikasi bahan dan kemasan.

*Based on **Figure 1**, construct with an aid of scaled freehand sketches a functional meeting room layout to accommodate eight people with an approximate area of 345 square feet (33 sq. meter) with the following provisions:*

- (a) *Single-leaf panel door*
- (b) *Wall partition*
- (c) *Audiovisual wall cabinet and storage credenza*
- (d) *Marker board*
- (e) *Mobile coffee cart*
- (f) *Optional power outlet at tabletop*

*Complete the sketch with a brief specification of materials and finishes.*

(40 markah/marks)

2. Berikan takrifan 'penghijauan ruang dalaman'. Buat penilaian diantara kebaikan dan keburukan penggunaan barang kemasan berikut.

*Define what is 'greening the interior'? Evaluate the pros & cons of the following material finishes:*

*High-pressure decorative laminate (HPDL)  
Linoleum  
Medium Density Fibreboard (MDF)  
Terracotta tiles*

(20 markah/marks)

...3/-

3. Bicarakan spesifikasi kerja seorang perekabentuk dalaman berdasarkan tahap-tahap pembinaan projek.

*Discuss the job specifications of an interior designer in relation to each levels of construction procurement?*

(20 markah/marks)

4. Buat **Empat (4)** nota ringkas berikut:

- (a) Tahap kompetitif
- (b) Keberkesanan Pulangan
- (c) Ruang urusniaga utama
- (d) Ruang sajian minuman & makanan
- (e) Ruang pejabat ala kediaman
- (f) Ruang pengkalan kerja pejabat

*Write **Four (4)** short notes on the following:*

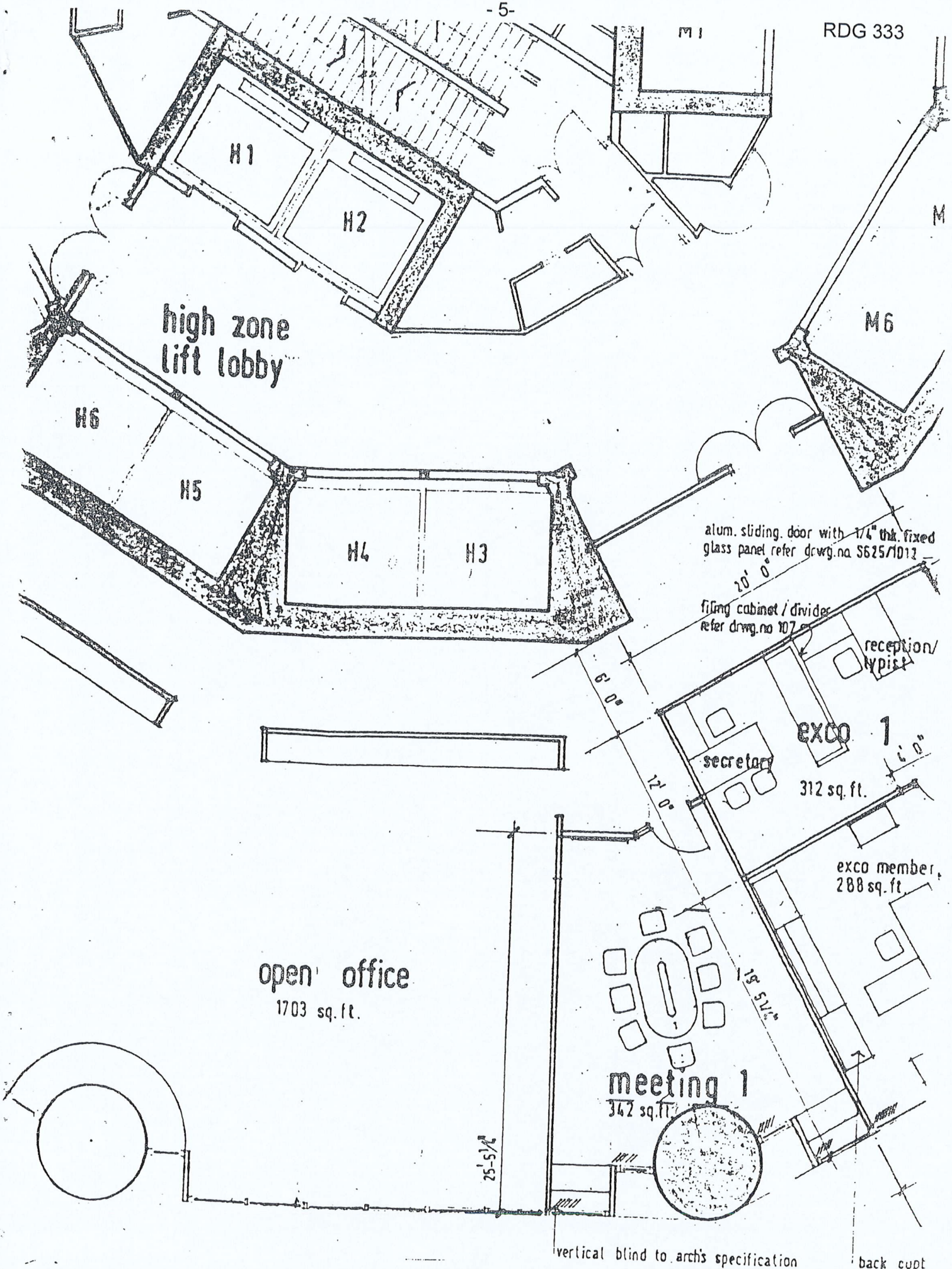
- (a) *Competitive point of difference*
- (b) *Returns on Effectiveness (ROE)*
- (c) *Magnet Store*
- (d) *Café & Eateries Establishment*
- (e) *Small Office Home Office (SOHO)*
- (f) *Office Workstation*

(20 markah/marks)

5. Buat huraian terperinci asas-asas penilaian prestasi kemudahan.

*Discuss the core foundations for Facility Performance Evaluation (FPE).*

(20 markah/marks)



TG7

GAMBARAJAH 1 / FIGURE 1

- 000000 -

TG6