

**DEVELOPMENT OF A LOCAL WARFARIN DOSAGE
GUIDELINE BASED ON PHARMACOGENOMICS
AND HAEMOSTATIC MARKERS**

CHUA YUNG AN

UNIVERSITI SAINS MALAYSIA

2016

**DEVELOPMENT OF A LOCAL WARFARIN
DOSAGE GUIDELINE BASED ON
PHARMACOGENOMICS AND HAEMOSTATIC
MARKERS**

by

CHUA YUNG AN

**Thesis submitted in fulfilment of the requirements
for the degree of
Doctor of Philosophy**

April 2016

DEDICATION

For all good people who died due to illness, may their names be written in the book of remembrance of God.

ACKNOWLEDGEMENT

Some people are unfortunate not to have parents to support their ventures. Yet, most are still successful. I am privileged enough to have both parents to stand behind me since the beginning. No matter how long it took for me to finish this study, they supported me unconditionally materially and emotionally. The completion of this thesis brings me a step closer to repay their sacrifices and undying love.

I would like to express my utmost gratitude to my supervisor, Prof Dr Gan Siew Hua, for being my main supervisor. For me, she is the best supervisor in the world, who always puts students first. She is a very knowledgeable but yet a humble person who always listens to her students' problem and willing to sacrifice her time, efforts or material just for the sake of students' success. Whenever I departed from the correct path, she always patiently brought me back on track. She not only taught me how to be a researcher, but also how to be a human being.

I would also like to thank both of my co-supervisors, Prof Dr Wan Zaidah Abdullah and Dato Prof Dr Zurkurnai Yusof for their support, kindness and advices. Prof Dr Wan Zaidah Abdullah is a very gentle supervisor who always give me very constructive advices whenever I have technical problem in sample collections. Her kindness is not just in academia, but extend to personal life. I never fail to receive a greeting card with good wishes during every Chinese New Year from her. Dato Prof Dr Zulkurnai Yusof is a very busy consultant cardiologist, but will always find time between his busy schedule just for me should help be needed. He always promptly and patiently answers my query emails, even though some of the questions may be too mundane for him, but is important for me.

After many years of laboratory work in Pharmacology Laboratory, I feel like the staff are like my family members. I would like to thank Pharmacology Laboratory scientific officer Mrs Norzihana Ramli for her strong support. Whenever I need a glass tube or a Pasteur pipette, Mrs Halijah Miran was the one I seek for. Whenever I need to haul

something heavy, Mr Muhd Lukman Mohamad would help me. Special thanks to all staff in Central Research Laboratory, especially Mrs Abdah Karimah Che Md Nor and Ms Suhada Anuar for always provide me with the necessary equipment for my PCR runs.

Special thanks to the late Haematology Laboratory scientific officer Mrs Wan Soriany Wan Md Zain, current scientific officer Mrs Norizah Tumin and Mrs Norazlina Binti Husni, Mr Nor Khairul Putra Mohd Madi and Mr Muhammad Ashraf Zulkarnain who are highly trained and dedicated Haematology Laboratory technicians who willing to come to the lab in weekend just to help me to the haemostatic assays of my samples. I am indebted to all friendly staff nurses working in Specialised Medicine Clinic. Thank you Mrs Ooi Good Siew, our Head Nurse, for supporting me in sample collection. I am also grateful for having two friendly and very responsible staff nurses, Mrs Che Rosnani Awang and Mrs Ramlah who helped me to draw blood from the patients.

Finally, I would like to thank all my colleagues, Dr Ruzilawati Abu Bakar, Ms Wardah Yosoff, Mr Tan Ka Liong, Ms Siti Hajar Mohd Hanafi, Mr Chew Shu Yih, Dr Loo Keat Wei, Dr Munvar Miya Shaik, Dr Mohammad Moniruzzaman, Dr Erejuwa Omotayo, Ms Tang Suk Peng, Ms Suzana Mustafa and Dr Siti Safiah Mokhtar for their assistances, peer-to-peer discussion and accompany. We will never walk alone in the academia.

Special thanks to Mrs Zuriati Zainuddin and INFORMM scientific officer Ms Nurfadhlina Musa for providing me with the positive controls for *CYP2C9*3* PCR, and lastly senior scientific officer of School of Health Sciences, Mr Rosliza Haron for his advices in handling the HPLC.

This research was funded by Research University Grant (1001/PPSP/815022) and Sort Term Grant (304/PPSP/61312019).

TABLE OF CONTENTS

Dedication.....	ii
Acknowledgement	iii
Table Of Contents	v
List Of Tables	xv
List Of Figures.....	xxi
List Of Abbreviations And Symbols.....	xxix
Abstrak	xxxii
Abstract.....	xxxiv
CHAPTER 1	
INTRODUCTION.....	1
1.1 Anticoagulation treatment.....	1
1.2 Thrombosis and thromboembolism	2
1.2.1 Definition	2
1.2.2 Pathogenesis.....	3
1.2.3 Prevalence	8
1.3 Warfarin	9
1.3.1 History.....	9
1.3.2 Indication and dosing	10
1.3.3 Pharmacokinetics	13
1.3.4 Pharmacodynamics	15
1.4 Pharmacogenetic aspects.....	17
1.4.1 Cytochrome P450 2C9 genes.....	17
1.4.2 Vitamin K epoxide reductase complex subunit 1	18

1.4.3 Clotting factor genes	23
1.4.4 Apolipoprotein E gene	23
1.4.5 Gamma-glutamyl carboxylase gene.....	24
1.4.6 Calumenin gene	24
1.4.7 Microsomal epoxide hydrolase gene.....	25
1.4.8 Other genes	25
1.5 Current problems	27
1.5.1 Interaction	27
1.5.2 Ethnicity.....	27
1.6 Study hypotheses and objectives.....	31
1.6.1 Hypotheses.....	31
1.6.2 Objectives	31

CHAPTER 2

MATERIALS AND METHODS	32
2.1 Study subjects	32
2.1.1 Introduction of method approach.....	32
2.1.2 Materials and equipment.....	32
2.1.3 Sample size calculation.....	34
2.1.3.1 Calculation of sample size based on percentage activity of clotting factors	36
2.1.3.2 Calculation of sample size based on genetic polymorphism.....	37
2.1.3.3 Calculation of sample size based on INR	39
2.1.3.4 Calculation of sample size based on plasma drug concentration	40
2.1.3.5 Selected sample size.....	41
2.1.4 Subject recruitment	41

2.2 Nested allele-specific multiplex PCR for identification of <i>VKORC1</i> genotypes.....	45
2.2.1 Introduction of method approach.....	45
2.2.2 Materials and instruments.....	47
2.2.3 DNA templates.....	47
2.2.3.1 Preparation of TE buffer.....	47
2.2.3.2 DNA extraction.....	50
2.2.4 Primers.....	51
2.2.4.1 Design.....	51
2.2.4.2 Synthesis and preparation.....	52
2.2.5 Polymerase chain reaction.....	57
2.2.5.1 First step PCR.....	57
2.2.5.2 Second step PCR.....	62
2.2.6 Agarose gel electrophoresis.....	68
2.2.6.1 Preparation of TBE buffer.....	68
2.2.6.2 Preparation of EtBr solution.....	68
2.2.6.3 Preparation of agarose gel.....	68
2.2.6.4 Gel electrophoresis and visualisation.....	69
2.2.7 Direct DNA sequencing.....	69
2.3 PCR-RFLP method for identification of <i>CYP2C9</i> *2 and *3 alleles.....	70
2.3.1 Introduction of method approach.....	70
2.3.2 Materials and instruments.....	70
2.3.3 DNA template.....	70
2.3.4 PCR primers.....	70
2.3.5 Polymerase chain reaction.....	71

2.3.5.1 PCR method optimisation	71
2.3.5.2 The effect of varying the annealing temperatures.....	75
2.3.5.3 The effect of varying MgCl ₂ concentrations	75
2.3.5.4 The effect of varying enzyme concentrations	75
2.3.5.5 The effect of varying primer concentrations.....	75
2.3.6 Restriction Fragment Length Polymorphism.....	76
2.3.6.1 Restriction Fragment Length Polymorphism method optimisation	76
2.3.6.2 The effect of varying DNA volume	76
2.3.7 Agarose gel electrophoresis	76
2.3.8 Direct DNA sequencing	80
2.4 PCR-RFLP method for identification of <i>VKORC1</i> -1639G>A allele.....	81
2.4.1 Introduction of method approach.....	81
2.4.2 Materials and instruments	81
2.4.3 DNA templates.....	81
2.4.4 PCR primers.....	81
2.4.5 Polymerase chain reaction	84
2.4.5.1 PCR method optimisation	84
2.4.5.2 The effect of varying annealing temperatures.....	87
2.4.5.3 The effect of varying MgCl ₂ concentrations	87
2.4.5.4 The effect of varying enzyme concentrations	87
2.4.6 Restriction Fragment Length Polymorphism.....	87
2.4.7 Agarose gel electrophoresis	88
2.4.8 Direct DNA sequencing	88
2.5 Haematology assays.....	91

2.5.1 Introduction of method approach.....	91
2.5.2 Materials and instruments	91
2.5.3 Preparation	94
2.5.3.1 Sample preparation	94
2.5.3.2 Reagents preparation.....	94
2.5.4 Haemostatic and INR test	95
2.5.4.1 Calibration curve and quality control.....	95
2.5.4.2 Analysis.....	95
2.6 HPLC determination of warfarin in human serum.....	96
2.6.1 Introduction.....	96
2.6.2 Chemicals and reagents.....	96
2.6.3 Mobile phase	100
2.6.4 Drug standard and internal standard solutions	100
2.6.4.1 Chemical Properties	100
2.6.4.2 Preparation	102
2.6.5 Method development and optimisation.....	104
2.6.6 Chromatographic equipment and parameters.....	104
2.6.7 Plasma standards and liquid-liquid extraction	107
2.6.8 Method validation	109
2.6.9 Preparation of actual samples	114
2.7 Pharmacokinetics	115
2.8 Statistical analysis and warfarin's dose requirement model building.....	116
2.9 Summary of data handling	117

CHAPTER 3

RESULTS	119
3.1 Subject's demographic and clinical data	119
3.2 Nested allele-specific multiplex PCR for identification of <i>VKORC1</i>	124
3.2.1 DNA extraction.....	124
3.2.2 Polymerase Chain Reaction	124
3.2.2.1 First step PCR.....	124
3.2.2.2 Second step PCR.....	134
3.2.3 The final optimised conditions.....	140
3.2.4 Direct DNA sequencing	140
3.2.5 Genotype frequency of individual <i>VKORC1</i>	149
3.2.6 Haplotype frequency of <i>VKORC1</i> haplotypes	149
3.3 PCR-RFLP method for identification of <i>CYP2C9</i> *2 and *3 alleles.....	152
3.3.1 Polymerase chain reaction	152
3.3.1.1 Polymerase chain reaction method optimisation.....	152
3.3.1.2 The effect of varying the annealing temperatures.....	152
3.3.1.3 The effect of varying MgCl ₂ concentrations	152
3.3.1.4 The effect of varying enzyme concentrations	157
3.3.1.5 The effect of varying primer concentrations.....	157
3.3.2 Restriction Fragment Length Polymorphism.....	160
3.3.2.1 Restriction Fragment Length Polymorphism method optimisation	160
3.3.2.2 The effect of varying DNA volumes.....	160
3.3.3 The final optimised conditions.....	160
3.3.4 Direct DNA sequencing	169

3.3.5 Genotype frequency of <i>CYP2C9</i> *2 and *3	169
3.4 PCR-RFLP method for identification of <i>VKORC1</i> -1639G>A.....	174
3.4.1 Polymerase chain reaction	174
3.4.1.1 Polymerase chain reaction method optimisation.....	174
3.4.1.2 The effect of varying annealing temperatures.....	174
3.4.1.3 The effect of varying MgCl ₂ concentrations	174
3.4.1.4 The effect of varying enzyme concentrations	175
3.4.2 Restriction Fragment Length Polymorphism.....	180
3.4.3 The final optimised conditions.....	180
3.4.4 Direct DNA sequencing	180
3.4.5 Genotype frequency of <i>VKORC1</i> -1639G>A	180
3.5 Haematology assays.....	187
3.5.1 Distribution of clotting factor activities among patients.....	187
3.5.2 Association of VKD clotting factors with other parameters	187
3.6 HPLC determination of warfarin in human serum.....	198
3.6.1 Spectrophotometry analysis	198
3.6.2 Optimisation of chromatographic conditions.....	200
3.6.2.1 The effect of varying the pH of the buffer solutions.....	200
3.6.2.2 The effect of varying the type of organic solvents.....	200
3.6.2.3 The effect of modifying the mobile phase composition.....	200
3.6.2.4 The effect of changing the buffer types	204
3.6.2.5 The effect of varying the buffer concentrations.....	204
3.6.2.6 Candidates for the internal standards	204
3.6.2.7 The effect of varying the column temperature.....	210

3.6.2.8	The effect of varying the flow rate.....	210
3.6.2.9	The effect of adding an organic modifier to the mobile phase.....	210
3.6.2.10	The effect of varying the PDA detection wavelength.....	214
3.6.2.11	The final chromatographic conditions	214
3.6.3	Optimisation of the LLE method	218
3.6.3.1	Extraction pH.....	218
3.6.3.2	Type of organic solvents	218
3.6.4	Method validation	223
3.6.4.1	Linearity and range	223
3.6.4.2	Recovery	223
3.6.4.3	Precision and accuracy.....	223
3.6.4.4	Limit of detection.....	228
3.6.4.5	Specificity	228
3.6.4.6	Stability	234
3.6.4.7	System suitability test	234
3.7	Pharmacokinetics	240
3.7.1	Pharmacokinetics parameters among healthy subjects	240
3.7.1.1	Concentration time curve	240
3.7.1.2	Peak concentration and time to reach peak concentration	243
3.7.1.3	Elimination rate constant	246
3.7.1.4	Absorption rate constant	246
3.7.1.5	Half-life.....	251
3.7.1.6	Clearance.....	251
3.7.1.7	Area under the curve.....	252

3.7.1.8 Overall pharmacokinetics data.....	253
3.7.2 Pharmacokinetics parameters among patients on warfarin treatment.....	253
3.7.2.1 Peak concentration and time to reach peak concentration	253
3.7.2.2 Elimination rate constant	256
3.7.2.3 Half-life.....	257
3.7.2.4 Clearance.....	257
3.7.2.5 Association with genetic polymorphisms	258
3.8 Warfarin dose requirement model building	262
3.8.1 Preliminary data analysis	262
3.8.2 Variable selection and removal of outliers.....	262
3.8.3 Final model of multiple linear regression	266
3.8.4 Assessment of the final model	268

CHAPTER 4

DISCUSSION	270
4.1 Genetic studies	270
4.2 Haemostatic markers.....	275
4.3 HPLC	278
4.4 Pharmacokinetics	289
4.5 Warfarin's dosing model	292
4.6 Study limitations and future research.....	295

CHAPTER 5

CONCLUSION	297
REFERENCES.....	298

APPENDIX A: Written informed consent form

APPENDIX B: Data collection form

APPENDIX C: Reminder card

APPENDIX D: Published papers

APPENDIX E: Participated conferences

LIST OF TABLES

Table 1.1	Risk factors of arterial and venous thrombosis	4
Table 1.2	Recommended INR ranges (MOH, 2010)	12
Table 1.3	<i>VKORC1</i> SNP variants used by Rieder <i>et al.</i> (2005) to delineate the haplotype of sensitivity to warfarin treatment	20
Table 1.4	Application of <i>VKORC1</i> , other genetic and demographic data and their reliability to explained warfarin dose variability	21
Table 1.5	Proposed warfarin's dosing models with the application of genetic data developed in some countries	29
Table 1.6	Allele frequency of warfarin-related genes in different ethnicities	30
Table 2.1	The list of materials and equipment used in the clinical study	33
Table 2.2	Inclusion and exclusion criteria of the study	42
Table 2.3	Summary of the amount of blood samples and time of blood collection	43
Table 2.4	Materials and reagents used in the <i>VKORC1</i> polymorphism investigation	48
Table 2.5	Equipment used for DNA extraction, PCR, agarose gel electrophoresis and visualisation	49
Table 2.6	Primers used in PCR1 for determination of <i>VKORC1</i> haplotypes	53
Table 2.7	Primers used in PCR2 for determination of <i>VKORC1</i> haplotypes	54
Table 2.8	The list of reagents in PCR mix with their concentrations for <i>VKORC1</i> haplotypes uniplex amplification	58

Table 2.9	Thermal cycling conditions for <i>VKORC1</i> haplotypes	59
Table 2.10	The list of primer pair concentrations for the investigation of the effect of varying primer concentrations in PCR1 of <i>VKORC1</i> haplotypes amplification	61
Table 2.11	Primer pairs for analysis of mutant and wild-type <i>VKORC1</i> allele in PCR 2	64
Table 2.12	The List of primer pair concentrations for the investigation of the effect of varying primer concentrations in PCR1 of <i>VKORC1</i> haplotypes amplification	66
Table 2.13	Primer sequence for determination of <i>CYP2C9</i> *2 and *3 alleles	72
Table 2.14	The list of reagents in the PCR mix with their respective concentrations for <i>CYP2C9</i> *2 and *3 amplification based on Ku <i>et al.</i> (2003)	73
Table 2.15	Thermal cycling conditions for <i>CYP2C9</i> *2 and <i>CYP2C9</i> *3 amplification based on Ku <i>et al.</i> (2003)	74
Table 2.16	The amounts of reagents used for <i>CYP2C9</i> *2 and *3 alleles RFLP	77
Table 2.17	Primers used in PCR for determination of <i>VKORC1</i> -1639G>A genotypes	83
Table 2.18	The list of reagents in PCR mix with their respective concentrations for <i>VKORC1</i> -1639G>A amplification based on Sconce <i>et al.</i> (2005)	85
Table 2.19	Thermal cycling conditions for <i>VKORC1</i> -1639G>A (Sconce <i>et al.</i> , 2005)	86

Table 2.20	The amounts of reagents used for <i>VKORC1</i> -1639G>A alleles RFLP	89
Table 2.21	The list of reagents used for haemostatic markers assay	92
Table 2.22	Equipment used for haemostatic markers assay	93
Table 2.23	Different HPLC methods to measure warfarin level found in literatures	97
Table 2.24	The list of chemicals and solvents* used in HPLC method development	98
Table 2.25	The list of drug standards and pharmaceutical products injected into the developed HPLC system	99
Table 2.26	Experiments conducted for optimisation of HPLC for serum warfarin measurement	105
Table 2.27	Equipments and conditions used in HPLC method development	106
Table 2.28	The concentration of 100 µL warfarin* working standard solution required to be spiked into 1 mL plasma to achieve the target plasma concentration	112
Table 3.1	Summary of patients' demographic and clinical data	120
Table 3.2	Concurrent medications prescribed by clinicians to patients on warfarin treatment which have high probability of altering the warfarin's sensitivity	121
Table 3.3	The final reagent concentration for PCR of <i>VKORC1</i> haplotypes	145
Table 3.4	The final thermal cycling condition of PCR1 for <i>VKORC1</i> haplotypes	146

Table 3.5	The final thermal cycling condition of PCR2 for <i>VKORC1</i> haplotypes	147
Table 3.6	Genotype frequency of <i>VKORC1</i> SNPs in 130 subjects and their respective purported related warfarin's dose requirements	150
Table 3.7	Haplotype frequency of <i>VKORC1</i> haplotypes in 130 subjects and their respective purported related warfarin's dose requirement	151
Table 3.8	The final reagent concentration for PCR of <i>CYP2C9*2</i>	164
Table 3.9	The final reagent concentration for PCR of <i>CYP2C9*3</i>	165
Table 3.10	The final thermal cycling condition of <i>CYP2C9*2</i>	166
Table 3.11	The final thermal cycling condition of <i>CYP2C9*3</i>	167
Table 3.12	The final RFLP condition for both <i>CYP2C9*2</i> and *3	168
Table 3.13	Genotype frequency of <i>CYP2C9*2</i> SNPs in 130 subjects and their respective purported related warfarin's dose requirement	172
Table 3.14	Genotype frequency of <i>CYP2C9*3</i> SNPs in 130 subjects and their respective purported related warfarin's dose requirement	173
Table 3.15	The final reagent concentration for PCR of <i>VKORC1</i> -1639G>A	182
Table 3.16	The final reagent concentration for PCR of <i>VKORC1</i> -1639G>A	183
Table 3.17	The final RFLP condition for <i>VKORC1</i> -1639G>A	184
Table 3.18	Genotype frequency of <i>VKORC1</i> -1639G>A SNPs in 130 subjects and their respective purported related warfarin's dose requirement	186
Table 3.19	Correlation between percentage activities of VKD clotting factors and current INR	193

Table 3.20	Comparison of percentage activities of VKD clotting factors between Malay and non-Malay ethnics	194
Table 3.21	Correlation between percentage activities of activated VKD clotting factors and age	195
Table 3.22	Comparison of percentage activities of VKD clotting factors between patients without and with MVR history	196
Table 3.23	Median percentage activities of activated VKD clotting factors for INR of different ranges	197
Table 3.24	Final chromatographic conditions for determination of warfarin in plasma	217
Table 3.25	Recovery of warfarin by area ratio	225
Table 3.26	Recovery of warfarin by slope ratio	226
Table 3.27	Precision and accuracy of the method for determination of warfarin in human plasma	227
Table 3.28	Stability tests	235
Table 3.29	Performance of warfarin chromatogram according to system suitability test	238
Table 3.30	Extrapolated concentration of warfarin levels by using the linear equation of elimination phase	248
Table 3.31	Concentration of warfarin level in absorption phase by using the linear equation of the absorption phase	249
Table 3.32	Logarithmic residual concentration of warfarin levels	250
Table 3.33	Pharmacokinetics data for warfarin	254

Table 3.34	The comparison of median of C_{max} according to genotypes of <i>CYP2C9*3</i> and <i>VKORC1</i> 381 and 9041	259
Table 3.35	The comparison of median of $t_{1/2}$ according to genotypes of <i>CYP2C9*3</i> and <i>VKORC1</i> 381 and 9041	260
Table 3.36	The comparison of median of CL according to genotypes of <i>CYP2C9*3</i> and <i>VKORC1</i> 381 and 9041	261
Table 3.37:	Potential predictor factors of mean warfarin dose in patients on warfarin treatment	264
Table 3.38	The association between <i>VKORC1</i> 381 and <i>VKORC1</i> -1639G>A alleles	265
Table 3.39	Predictor factors of mean warfarin dose in patients on warfarin treatment	267
Table 3.40	Predicted mean warfarin dose calculated based on the new dosing model	269

LIST OF FIGURES

Figure 1.1	(S)-warfarin (1a) and (R)-warfarin (1b) with different orientation of their benzene rings (Li and Robinson, 2001)	14
Figure 1.2	Vitamin K cycle and inhibition clotting factors activation by warfarin	16
Figure 2.1	Flow chart of subjects recruitment and blood drawing process	44
Figure 2.2	Haplotyping tree derived from a genealogical tree, as proposed by Rieder <i>et al.</i>	46
Figure 2.3	Graphical representative of expected gel electrophoresis findings for PCR1 of <i>VKORC1</i> amplification	55
Figure 2.4	Graphical representative of expected gel electrophoresis findings for PCR2 of <i>VKORC1</i> amplification	56
Figure 2.5	Graphical representative of expected gel electrophoresis result for PCR-RFLP <i>CYP2C9*2</i>	78
Figure 2.6	Graphical representative of expected gel electrophoresis result for PCR-RFLP <i>CYP2C9*3</i>	79
Figure 2.7	Graphical representative of expected gel electrophoresis result for PCR-RFLP <i>VKORC1</i> -1639G>A	90
Figure 2.8	Chemical structures of A : warfarin and B : the internal standard phenylbutazone (Calvero, 2006; Dschanz, 2007)	101
Figure 2.9	Preparation of working standard solutions of warfarin and internal standard	103
Figure 2.10	Flow chart of the liquid-liquid extraction method	108

Figure 2.11	Preparation of QC plasma samples by using 60 µg/mL warfarin working standard solution	113
Figure 2.12	Summary of obtained data and data handling	118
Figure 3.1	Percentage of hospital visits where the INRs were in therapeutic range ($n=130$)	122
Figure 3.2	Mean warfarin dose up to two years before and after the date of assessment	123
Figure 3.3	<i>VKORC1</i> 381/861 (1060 bp), 9041 (853 bp) and 5808 (398 bp) PCR1 uniplex amplification products from a test subject when using the initial reagent and thermal cycler conditions suggested by the reagents' manufacturer	125
Figure 3.4	<i>VKORC1</i> 381/861(1060 bp), 9041 (853 bp) and 5808 (398 bp) PCR1 multiplex amplification products from test subjects S1, S2 and S3 when using the initial reagent and thermal cycler conditions suggested by the reagents manufacturer	126
Figure 3.5	<i>VKORC1</i> 381/861 (1060 bp), 9041 (853 bp) and 5808 (398 bp) PCR1 multiplex amplification products when the primer pairs were concentrations set as (A) 0.5 mM each, (B) 0.60, 0.25, 0.25 nM, (C) 0.65, 0.20, 0.20 nM, and (D) 0.07, 0.15, 0.15	129
Figure 3.6	Multiplex PCR amplification products for PCR1 of <i>VKORC1</i> 381/861 (1060 bp), 9041 (853 bp) and 5808 (398 bp) when the annealing temperature was varied between 57.0 and 64.0°C	130

Figure 3.7	Multiplex PCR amplification products for PCR1 of <i>VKORC1</i> 381/861 (1060 bp), 9041 (853 bp) and 5808 (398 bp) when MgCl ₂ concentration was varied between 1.5 and 2.5 mM	131
Figure 3.8	Multiplex PCR amplification products for PCR1 of <i>VKORC1</i> 381/861 (1060 bp), 9041 (853 bp) and 5808 (398 bp) when <i>Taq</i> polymerase concentration was varied between 0.05 and 0.25 U	132
Figure 3.9	Multiplex PCR amplification products for PCR1 of <i>VKORC1</i> 381/861 (1060 bp), 9041 (853 bp) and 5808 (398 bp) when DNA amount was varied between 0.01 and 0.30 µg	133
Figure 3.10	<i>VKORC1</i> 381 (960 bp), 861 (480 bp), 9041 (434 bp) and 5808 (280 bp) products following PCR2 uniplex amplification of a test subject when the initial reagent and thermal cycler conditions suggested by the reagents' manufacturer were used	136
Figure 3.11	<i>VKORC1</i> 381 (960 bp), 861 (480 bp), 9041 (434 bp) and 5808 (280 bp) products following PCR2 multiplex amplification of test subjects S1, S2 and S3 when the initial reagent and thermal cycler conditions suggested by the reagents' manufacturer were used	137
Figure 3.12	<i>VKORC1</i> 381 (960 bp), 861 (480 bp), 9041 (434 bp) and 5808 (280 bp) products following PCR2 multiplex amplification when all primer pairs concentration were set as A : 0.5 mM each, B : 0.50, 0.25, 0.05, 0.05 mM, and C : 0.70, 0.05, 0.09, 0.06 mM	138
Figure 3.13	<i>VKORC1</i> 381 (960 bp), 861 (480 bp), 9041 (434 bp) and 5808 (280 bp) products following PCR2 multiplex amplification when the DMSO concentration was varied between 0.0 and 7.5%	141

Figure 3.14	<i>VKORC1</i> 381 (960 bp), 861 (480 bp), 9041 (434 bp) and 5808 (280 bp) products following PCR2 multiplex amplification when MgCl ₂ was varied between 1.5 and 2.5 mM	142
Figure 3.15	<i>VKORC1</i> 381 (960 bp), 861 (480 bp), 9041 (434 bp) and 5808 (280 bp) products following PCR2 multiplex amplification when <i>Taq</i> polymerase concentration was varied between 0.25 and 1.25 U	143
Figure 3.16	<i>VKORC1</i> 381 (960 bp), 861 (480 bp), 9041 (434 bp) and 5808 (280 bp) products following PCR2 multiplex amplification when amount of DNA was varied between 7.5 and 17.5 ng	144
Figure 3.17	Electropherogram of <i>VKORC1</i> A: 861 wild-type (CC), B: 5808 wild-type (TT), C: 9041 heterozygous (GA) and D: 9041 mutant (AA) sequences	148
Figure 3.18	<i>CYP2C9*2</i> PCR amplification products of test subject S1 - S4 by using the reagent and thermal cycler conditions adopted from Ku <i>et al.</i> (2003)	153
Figure 3.19	<i>CYP2C9*3</i> PCR amplification products for test subjects S1 and S2 by using the reagent and thermal cycler conditions adopted from Ku <i>et al.</i> (2003).	154
Figure 3.20	<i>CYP2C9*3</i> amplification products by using annealing temperature between 55.0 and 65.0°C	155
Figure 3.21	<i>CYP2C9*3</i> amplification products by using MgCl ₂ concentrations between 0.5 and 5.0 mM	156
Figure 3.22	<i>CYP2C9*3</i> amplification products by using <i>Taq</i> polymerase concentrations between 0.5 and 3.0 U	158

Figure 3.23	<i>CYP2C9*3</i> amplification products produced by using primer concentrations between 0.3 and 0.8 μ M	159
Figure 3.24	Digestion products of <i>CYP2C9*2</i> PCR amplification for test subjects S1 to S4 when using the initial RFLP condition	161
Figure 3.25	<i>CYP2C9*3</i> PCR amplification digestion products for test subjects S1 to S6 when the initial RFLP condition was used	162
Figure 3.26	<i>CYP2C9*3</i> PCR amplification digestion products when different DNA volumes were used	163
Figure 3.27	Electropherogram of <i>CYP2C9*2</i> A: wild-type (CC) and B: heterozygous (CT) sequences	170
Figure 3.28	Electropherogram of <i>CYP2C9*3</i> A: wild-type (AA) and B: heterozygous (AC) sequences	171
Figure 3.29	<i>VKORC1</i> -1639G>A PCR amplification products from test subjects S1 - S4 when the initial reagent and thermal cycler conditions adopted from Sconce <i>et al.</i> (2005) were used	176
Figure 3.30	<i>VKORC1</i> -1639G>A amplification products by using annealing temperature between 55.0 and 65.0°C	177
Figure 3.31	<i>VKORC1</i> -1639G>A amplification products by varying MgCL ₂ concentrations between 0.5 and 2.5 mM	178
Figure 3.32	<i>VKORC1</i> -1639G>A amplification products by varying <i>Taq</i> polymerase concentrations between 0.25 and 2.50 U	179
Figure 3.33	Digestion products of <i>VKORC1</i> -1639G>A PCR amplification from test subjects a to f when the initial RFLP condition was used	181

Figure 3.34 Electropherogram of <i>VKORC1</i> -1639 A: wild-type (GG), B: heterozygous (GA) and C: mutant (AA) sequences	185
Figure 3.35 Distribution of percentage activities of VKD clotting factor II	189
Figure 3.36 Distribution of percentage activities of VKD clotting factor VII	190
Figure 3.37 Distribution of percentage activities of VKD clotting factor IX	191
Figure 3.38 Distribution of percentage activities of VKD clotting factor X	192
Figure 3.39 Maximum UV absorbances of A: warfarin B: indomethacin C: procaine D: eserine E: phenylbutazone and F: sulphadiazine recorded by the PDA detector	199
Figure 3.40 Chromatograms of warfarin when the pH of KH_2PO_4 buffer was adjusted to A: 6.5 and B: 7.5	201
Figure 3.41 Chromatograms of warfarin when using A: MeOH and B: ACN as the mobile phase	202
Figure 3.42 Chromatograms of warfarin when the composition of mobile phase was A: 60:40 and B: 70:30	203
Figure 3.43 Chromatograms of warfarin when the buffer solution was A: KH_2PO_4 B: NaH_2PO_4 and B: CH_3COOK	205
Figure 3.44 Chromatograms of warfarin when the buffer concentration was adjusted to A: 0.01 M B: 0.05 M and C: 0.1 M	206
Figure 3.45 Chromatograms when A: indomethacin B: procaine C: diethylstilbestrol D: eserine E: phenylbutazone F: sulphadiazine and G: lignocaine were injected into the HPLC system under the same chromatographic conditions	207

Figure 3.46 Chromatograms of warfarin and phenylbutazone when the column temperature was set at A: 25°C and B: 30°C	211
Figure 3.47 Chromatograms of warfarin when the flow rates were set at A: 0.5 B: 0.75 and C: 1.0 mL/min	212
Figure 3.48 Chromatograms of warfarin when A: using mobile phase with 1% acetic acid and B: using mobile phase without acetic acid	213
Figure 3.49 Chromatograms when PDA detection wavelength range was set at A: 190-800 B: 309.4 C: 300 D: 290 and E: 280 nm	215
Figure 3.50 Chromatograms of warfarin when the sample was extracted by using liquid-liquid extraction method with extraction pHs adjusted to A: pH 3.5 B: pH 4.5 C: pH 5.5 and D: pH 6.5	219
Figure 3.51 Chromatograms of warfarin when the sample was extracted using liquid-liquid extraction method with A: diethyl ether B: ethyl acetate C: dichloromethane D: chloroform and E: diethyl ether : <i>n</i> -hexane (2:1) as the extraction organic solvent	221
Figure 3.52 Calibration curve of area ratio of warfarin to phenylbutazone on A: validation day 1 B: validation day 2 and C: validation day 3	224
Figure 3.53 Chromatogram of warfarin and phenylbutazone when warfarin standard solutions of A: 0.1 B: 0.2 C: 0.5 D: 1 and E: 5 µg/mL were injected into the HPLC system and phenylbutazone was injected at a constant concentration of 10 µg/mL	229
Figure 3.54 Chromatogram of A: digoxin B: frusemide C: atenolol D: propranolol E: atorvastatin F: pravastatin G: aspirin H: amlodipine and I: enalapril when injected into the HPLC system under the same chromatographic conditions	231

Figure 3.55 Representative chromatogram of plasma warfarin and phenylbutazone extracted by using the optimised LLE method with the optimised chromatographic condition.	239
Figure 3.56 Mean serum concentration of oral warfarin (6 mg) against time in 53 hr	241
Figure 3.57 Logarithmic mean serum concentration of oral warfarin in 53 hr	242
Figure 3.58 Warfarin's log concentration versus time plot and its linear equation during absorption phase	244
Figure 3.59 Warfarin's log concentration versus time plot and its linear equation during elimination phase	245
Figure 3.60 Logarithmic mean serum concentration of patient's oral warfarin over two days period	255

LIST OF ABBREVIATIONS AND SYMBOLS

ACN	Acetonitrile
AGP	α_1 -acid glycoprotein
AF	Atrial fibrillation
<i>APOE</i>	Apolipoprotein E gene
aPTT	Activated partial thromboplastin time
AUC	Area under the curve
BMI	Body mass index
BP	Base pair
<i>CALU</i>	Calumenin gene
CHF	Congestive heart failure
CL	Clearance
C_{\max}	Maximum concentration
CV	Coefficient of variation
COPD	Chronic obstructive pulmonary disease
<i>CYP</i>	Cytochrome P450 gene
dH ₂ O	Distilled water
DMSO	Dimethyl sulphoxide
DNA	Deoxyribonucleic acid
DVT	Deep vein thrombosis
FDA	Food and Drug Administration
EDTA	Ethylenediaminetetraacetic acid
eNOS	Endothelial nitric oxide synthase
<i>EPHX1</i>	Microsomal epoxide hydrolase gene

<i>GGCX</i>	γ -carboxyglutamic acid gene
<i>GSTA1</i>	Glutathione S-transferase gene
HDL	High-density lipoprotein
HPLC	High performance liquid chromatography
hr	Hour(s)
IHD	Ischaemic heart disease
INR	International normalised ratio
IQR	Interquartile range
ISI	International sensitivity index
K_a	Absorption rate constant
k_{el}	Elimination rate constant
LDL	Low-density lipoprotein
LOD	Limit of detection
LLE	Liquid-liquid extraction
LLOQ	Lowest limit of quantification
MeOH	Methanol
MI	Myocardial infarction
min	Minute(s)
NaOH	Sodium hydroxide
NF- κ B	Nuclear factor kappa B
NO	Nitric oxide
NSAID	Non-steroidal anti-inflammatory drug
<i>ORM1</i>	Orosomucoid 1 gene
PCR	Polymerase chain reaction

PE	Pulmonary embolism
pH	$-\log_{10}$ of hydrogen ion concentration
pK _a	$-\log_{10}$ of acid dissociation constant
<i>PROC</i>	Protein C gene
PT	Prothrombin time
QC	Quality control
r^2	Correlation coefficient
RF	Response factor
RFLP	Restriction fragment length polymorphism
ROS	Reactive oxygen species
RSD	Relative standard deviation
sec	Second(s)
SD	Standard deviation
<i>Taq</i>	<i>Thermus aquaticus</i>
TF	Tissue factor
$t_{1/2}$	Half-life
t_{\max}	Time to maximum concentration
UV	Ultraviolet
VKCFD	Vitamin K-dependant clotting factor deficiency
VKD	Vitamin K-dependent
VKOR	Vitamin K epoxide reductase
<i>VKORC1</i>	Vitamin K epoxide reductase complex subunit 1gene
vs	Versus
VTE	Venous thromboembolism
vWF	von Willebrand factor

PEMBANGUNAN GARIS PANDUAN DOS WARFARIN TEMPATAN BERASASKAN FARMAKOGENOMIK DAN PENANDA-PENANDA HEMOSTASIS

ABSTRAK

Warfarin merupakan antikoagulan oral utama yang mempunyai indeks terapeutik yang sempit dan perbezaan dos antara individu yang luas, menyebabkan kerumitan pengkalan dos optimumnya untuk setiap individu. Banyak model pengedaran warfarin telah dibangunkan di seluruh dunia bertujuan untuk menambahbaik ketepatan kaedah pengedaran nisbah ternormal antarabangsa (INR) yang digunakan sekarang. Walau bagaimanapun, model-model pengedaran berkenaan tidak praktikal untuk digunakan kerana memerlukan banyak data tambahan untuk pengiraan dos. Di dalam kajian ini, sebuah model pengedaran warfarin untuk populasi tempatan yang lebih mudah telah dikaji untuk permulaan semula rawatan warfarin berasaskan data klinikal, makmal dan genetik.

Sejumlah 130 pesakit telah direkrut daripada Hospital Universiti Sains Malaysia untuk pembinaan model tersebut. Data klinikal pesakit diambil daripada pengkalan data hospital. Kaedah tindak balas berantai polimerase - polimorfisme pemotongan panjang cebisan (PCR-RFLP) telah digunakan untuk penjenisan *CYP2C9**2, *3 dan *VKORC1* - 1639G>A, manakala sebuah kaedah PCR multipleks spesifik alel tersarang yang baharu dibangunkan telah digunakan untuk penjenisan *VKORC1* 381, 861, 5808 dan 9041. Data-data genotip *VKORC1* 381, 861, 5808 dan 9041 telah digunakan untuk mengiferensikan haplotip *VKORC1*. Aktiviti faktor koagulasi II, VII, IX dan X bergantung vitamin K (VKD) telah diukur dengan menggunakan mesin penganalisis hemostatik. Sebuah kaedah baharu kromatografi cecair berprestasi tinggi (HPLC) dengan pengesan UV dibangunkan dan disahkan untuk digunakan bagi mengukur aras warfarin serum yang kemudiannya digunakan untuk pengiraan data farmakokinetik di dalam 24 orang pesakit. Model pengedaran warfarin telah dibangunkan dengan menggunakan kaedah regresi linear berbilang ke depan.

Genotip *CYP2C9**2 dan *3 mutan heterozigot adalah jarang (kedua-duanya dengan kekerapan 3.8%), manakala genotip mutan homozigot langsung tidak dikesan. Kekerapan *VKORC1* -1639G>A dan *VKORC1* 381 adalah sama. Genotip dengan kekerapan paling tinggi adalah genotip yang berkeperluan dos warfarin rendah (GG: 54.6%). *VKORC1* H1H1, H1H7 atau H1H9 dan H7H7 adalah pasangan-pasangan haplotip yang paling lazim (53.1, 32.5 dan 10.0%). Kesemua aktiviti faktor koagulasi VKD tidak berhubungkait secara ketara dengan keperluan dos warfarin INR. Kepekatan maksimum serum, separuh hayat dan pembersihan warfarin tidak berhubungkait secara ketara dengan mana-mana data genetik atau keperluan dos warfarin. Model pengedosan warfarin muktamad adalah terdiri daripada umur, jumlah alel *VKORC1* 381, min INR dan sejarah penggantian injap mitral sebagai faktor-faktor peramal. Faktor-faktor peramal tersebut dapat menerangkan 45.6% kebolehubahan dos warfarin.

Model pengedosan yang dibangunkan adalah sesuai untuk digunakan sebagai garis panduan untuk menentukan dos warfarin pesakit yang memerlukan permulaan semula rawatan warfarin.

DEVELOPMENT OF A LOCAL WARFARIN DOSAGE GUIDELINE BASED ON PHARMACOGENOMICS AND HAEMOSTATIC MARKERS

ABSTRACT

Warfarin, the mainstream oral anticoagulant, has a narrow therapeutic index and wide interindividual dose variability, rendering maintaining its optimal dose in each individual a difficult task. Many warfarin dosing models have been developed worldwide in order to improve the accuracy of currently used international normalised ratio (INR) dosing method. However, those dosing models were not practical to be used due to extensive additional data that are required for dose calculation. In this study, a simpler warfarin's dosing model for local population has been studied for warfarin therapy reinitiation based on clinical, laboratory and genetic data.

A total of 130 of patients on warfarin treatment in Hospital Universiti Sains Malaysia were recruited for the model-building. Patients' clinical data were extracted from the hospital database. Polymerase chain reaction - restriction fragment length polymorphism (PCR-RFLP) methods were used for genotyping of *CYP2C9**2, *3 and *VKORC1* -1639G>A while a newly developed nested allele-specific multiplex PCR was used for genotyping of *VKORC1* 381, 861, 5808 and 9041. Genotype data of *VKORC1* 381, 861, 5808 and 9041 were used to infer *VKORC1* haplotype. The activity of vitamin K-dependent (VKD) clotting factors II, VII, IX and X were measured by using a benchtop haemostatic analyser. A newly developed and validated high performance liquid chromatography (HPLC) method with UV detector was used for measurement of serum warfarin levels that were subsequently used for pharmacokinetics data calculation in 24 patients. The warfarin's dosing model was developed by using a forward multiple linear regression.

The heterozygous mutant genotype of *CYP2C9**2 and *3 were rare (both at 3.8%), while the homozygous mutant was not detected. The frequency of *VKORC1* -1639G>A and

VKORC1 381 were similar. The genotype with highest frequency was the low warfarin's dose requirement genotype (GG: 54.6%). The *VKORC1* H1H1, H1H7 or H1H9 and H7H7 were the most common haplotype pairs (53.1, 32.5 and 10.0%). All VKD clotting factor activities were not significantly associated with warfarin's dose requirement or with the INR. Maximum serum concentration, half-life and clearance of warfarin were not significantly associated with any genetic data or warfarin's dose requirement. The final warfarin's dosing model consists of age, the number of *VKORC1* 381 allele, mean INR and history of mitral valve replacement as useful predictor factors. The predictor factors explained 45.6% of warfarin dose variability.

The developed dosing model is suitable to be used as guideline to determine the warfarin dose of patients who need to reinstate a warfarin therapy.

CHAPTER 1

INTRODUCTION

1.1 Anticoagulation treatment

Warfarin is an oral anticoagulant prescribed to patients to prevent pathological blood clot in circulation, also known as thrombosis. Thrombosis can impose life-threatening health risks such as stroke and pulmonary embolism (PE). However, warfarin has a narrow therapeutic window in which insufficient dose will fail to protect the patient from the disease, while excessive dose can expose patients to uncontrolled bleeding. Therefore, patients are expected to adhere to the prescription and comply with a lower vitamin K diet to prevent food-warfarin interaction. Besides food, concomitant medications, supplements and the presence of other risk factors such as liver impairment and fever can also affect warfarin's sensitivity (Demirkan *et al.*, 2000). Once warfarin is prescribed, the patients are required to regularly visit healthcare providers in order to re-adjust warfarin's dose according to the lifestyle changes.

Although several novel oral anticoagulants require less frequent dose adjustment and show minimum food-drug interactions such as dabigatran, rivaroxaban and apixaban are already commercially available and are superior (or at least not inferior) in their therapeutic outcomes (Ahrens *et al.*, 2011). Warfarin still remains as the mainstay oral anticoagulant due to its cheaper cost and established use especially in the event of overdose.

Nevertheless, dosing of warfarin is not simple because although warfarin is given according to the dosing guideline and patients comply to the therapy, overdosing still occur rather frequently. Numerous studies have indicated that genetic polymorphisms affect the pharmacokinetics and pharmacodynamics of warfarin (Yin and Miyata, 2007; Kamali and Wynne, 2010) thereby rendering patients to be either resistant or sensitive to warfarin treatment. Since warfarin is likely to be incorporated in the clinical settings for years to come,

a better understanding on how genetic polymorphism are associated with warfarin's sensitivity is needed. It is hoped that the integration of genetic data and other coagulation markers into pre-existing warfarin dosing guidelines may improve dosing accuracy thereby reducing adverse effects.

1.2 Thrombosis and thromboembolism

1.2.1 Definition

Blood is a dynamic body fluid which carry various gasses, nutrients, hormones and chemical compounds throughout the body. Escape of blood from the blood vessel need to be immediately stopped to avoid uncontrolled haemorrhage. It has been reported that human can sustain up to 20% of blood loss before experiencing a hypovolaemic shock and getting the risk of reperfusion injury (Mannucci and Levi, 2007; Shults *et al.*, 2008). When the blood vessel is exposed to injury, haemostasis is triggered in which platelet can initiate plasma plug formation to temporarily seal the ruptured blood vessel. Meanwhile, a coagulation cascade will start in which the clotting factors will undergo a series of activations to form blood clot at the injury site to prevent the outflow of blood from the blood vessel. The clot formation is regulated by naturally occurring anticoagulants (antithrombin III, protein C and protein S) to contain the clot to only within the vicinity of the injured blood vessel (High, 1988).

However, in the presence of a pathological condition, thrombus can block the blood flow to vital organs which can lead to hypoxia and eventually becomes necrotic. The formation of thrombosis in the artery vary from that in the vein (Previtali *et al.*, 2011). Arterial thrombosis is usually an outcome of atherosclerosis. The arterial thrombus, also known as white thrombus, mainly consists of white blood cells and platelets with cardiac muscle being one of the most commonly affected organ. Decreased oxygen supply to cardiac muscles can cause ischaemic heart disease (IHD) and eventually leads to myocardial infarction (MI), while thrombosis in brain artery can cause stroke. On the other hand, venous

thrombosis leads to venous thromboembolism (VTE), where the thrombus itself may dislodge from its original site and travel throughout the circulation as an embolus. The most common VTE is deep vein thrombosis (DVT), where the thrombus is usually formed in the leg veins. The venous thrombus, also known as red thrombus, mainly consist of red blood cells and fibrin. The dislodged embolus from the DVT may stop at the lung blood vessel and lead to PE.

1.2.2 Pathogenesis

Arterial and venous thrombosis have different pathogenesis and risk factors (Table 1.1). In the artery, the thrombus is mainly formed following atherosclerosis. Atherosclerosis is thickening of the artery wall due to the accumulation of monocytes, macrophages, dead cells, cholesterol, calcium and fibrous tissues within the arterial endothelium. One of the major risk factors of atherosclerosis is the presence of metabolic syndrome (Glasser *et al.*, 1996). Individuals with metabolic syndrome are characterised by high level of low-density lipoprotein (LDL), low level of high-density lipoprotein (HDL), hypertension, hyperglycaemia and abdominal obesity (Paoletti *et al.*, 2006). Collectively, these disorders exacerbate the intrusion of macrophages beneath the blood vessel, induce endothelial dysfunction by reducing the level of indigenous vasodilator nitric oxide (NO) (Mehta *et al.*, 2001), produce pro-inflammatory cytokines (Zhu *et al.*, 2005; Fernández-Sánchez *et al.*, 2011) and cell adhesion mediators (Zeicher *et al.*, 1995), increase oxidative stress on the artery (Cosentino *et al.*, 1997; Guzik *et al.*, 2002) ultimately leading to atherosclerosis.

Table 1.1: Risk factors of arterial and venous thrombosis

Arterial	Venous	
	Virchow's triad	Contemporary categories
<p>Metabolic syndrome</p> <ul style="list-style-type: none"> • High LDL level • Low HDL level • Hyperglycaemia • Hypertension • Abdominal obesity <p>Smoking</p> <p>Male</p> <p>Cardiac disorders</p> <ul style="list-style-type: none"> • AF • Valvular diseases <ul style="list-style-type: none"> ○ Ageing ○ Rheumatic disease ○ Endocarditis ○ Congenital heart defect • Prosthetic heart valve 	<p>Blood flow stasis</p> <ul style="list-style-type: none"> • Immobilisation • Left atrial appendage coagulation • Left ventricular dilatation • Mitral valve stenosis <p>Epithelial injury</p> <ul style="list-style-type: none"> • Trauma • Endothelial inflammation • Infection <p>Abnormal blood constituent</p> <ul style="list-style-type: none"> • Abnormal platelet level • Abnormal globulin level • Abnormal fibrinogen level • Abnormal calcium level • Dehydration • Pregnancy • Infection • Obesity 	<p>Acquired</p> <ul style="list-style-type: none"> • Ageing <ul style="list-style-type: none"> ○ Hospitalisation ○ Dysfunctional endothelium ○ Venous insufficiency ○ CHF ○ COPD ○ Increase levels of clotting factors ○ Increase levels of fibrinolysis inhibitors • Previous thrombosis • Immobilisation • Major surgery • Oral contraceptive • Hormone replacement therapy • Antiphospholipid syndrome • Myeloproliferative disorders • Cancer • Pregnancy <p>Inherited</p> <ul style="list-style-type: none"> • Decrease expression of antithrombin III • Decrease expression of protein C and S • Factor V Leiden <i>G1691A</i> mutation • Prothrombin <i>G20210</i> mutation <p>Mixed</p> <ul style="list-style-type: none"> • Ageing with clotting factor genes mutation • Hyperhomocysteinaemia

LDL = low-density lipoprotein; HDL = high-density lipoprotein; CHF = congestive heart failure; COPD = chronic obstructive pulmonary disease

Smoking is a non-metabolic syndrome risk factors of atherosclerosis. Nicotine in tobacco smoke can induce arterial stiffness besides elevating plasma LDL level while lowering plasma HDL levels (Powell, 1998; Villablanca *et al.*, 2000). Male individuals also have increased predisposition to atherosclerosis when compared with females. *In-vitro* study showed that androgen hormone up-regulate atherosclerosis-related genes in macrophages derived from male donors but not in macrophages derived from female donors (Ng *et al.*, 2003).

Non-atherosclerosis-related arterial thromboses caused by cardiac disorders such as atrial fibrillation (AF) leads to irregular heart rhythm that promotes stagnant blood flow at atrial appendage (GalalAzzam, 2013). Valvular heart diseases especially mitral valve stenosis, can cause blood stasis in left atrium (Demir *et al.*, 2001; Misumi *et al.*, 2003; Rost *et al.*, 2008). The stagnant blood eventually leads to thrombosis. Therefore, heart valve replacement as a consequence of valvular disease, especially the use mechanical prosthetic valve, may also increased the risk of thrombosis (Roudaut *et al.*, 2007; Pibarot and Dumesnil, 2009).

Venous thrombosis has different pathogenesis where the thrombus are not formed on an atheromatous plaque. Classically, the pathogenesis of venous thrombosis is related to the risk factors as described in Virchow's Triad, a postulation that relates thrombogenesis with three factors, which are blood flow stasis, epithelial injury and abnormal blood constituent (Lip and Gibbs, 1999). Nevertheless, this postulation is obsolete with a new categorical system used to classify the risk factors of venous thrombosis. Currently, venous thrombosis risk factors are divided into three groups: acquired, inherited and mixed risk factors (Rosendaal, 1997). The strongest acquired risk factor for thrombosis is advanced age, caused by numbers of elderly-related co-morbidities and increase in level of various plasma proteins and clotting factors (Cushman, 2007; Ageno *et al.*, 2008).

The remaining acquired risk factors include exposure to previous thrombosis, immobilisation, major surgeries, oral contraceptive-induced activated protein C resistant, hormone replacement therapy, antiphospholipid syndrome and myeloproliferative disorders (Rosing *et al.*, 2001; Ortel, 2005; Tefferi and Elliott, 2007; Pottier *et al.*, 2009; Healy *et al.*, 2010). Cancer patients also have a high risk of thrombosis due to the production of tissue factor (TF) by affected organs and cancer cells (Prandoni *et al.*, 2005; Hron *et al.*, 2007). Pregnancy is also closely related to increased level of thrombosis clotting factors VII, X, and VIII, fibrinogen and vWF levels with decreased the natural anticoagulant protein levels. (Brenner, 2004).

Thrombosis can also be an inherited genetic disorder. Mutations may not only decrease the expression of certain naturally occurring anticoagulants such as antithrombin III, protein C and protein S (Pabinger *et al.*, 1992), but also cause gain-of-function of certain clotting factors. Factor V Leiden G1691A and prothrombin G20210 are the most common thrombophilic mutations, which can cause gain-of-function by making factor V able to resist Protein C inactivation and upregulating the production of prothrombin, respectively (Bertina *et al.*, 1994; Castoldi *et al.*, 2007). It has been reported that family members from a person with a history of thrombophilia are more susceptible to thrombosis (Ben-Tal *et al.*, 1989; Allaart *et al.*, 1993) and may experience thrombosis in earlier age (Lensen *et al.*, 1996) when compared with individuals who do not have such family history.

Non-genetic risk factors may also play a role in thrombosis along with genetic factors. Although there are evidences that increased levels of clotting factors VIII, IX, XI and fibrinogen are familial disorders (Lane and Grant, 2000; Jenkins *et al.*, 2012), other factors like ageing and inflammation also contribute to thrombogenesis (Previtali *et al.*, 2011). Hyperhomocysteinaemia, a disorder that cause endothelial dysfunction, is contributed by both genetic mutation in methylenetetrahydrofolate reductase gene and deficiency in vitamins B₁₂, B₆ and folate levels (Selhub and D'Angelo, 1998).

Despite the discrete categories, venous thrombosis is often multicausal. A study found that 84% of children with DVT have more than a single risk factor for thrombosis (Andrew *et al.*, 1994). Except for some major surgeries and traumas, most single risk factors of thrombosis are unlikely to cause thrombosis hence requiring no prophylaxis (Anderson and Spencer, 2003). However, the interaction between the risk factors for thrombosis is synergistic. For example, individuals with factor V Leiden suffering from leg injury are 50-fold more likely to develop thrombosis when compared with individuals without both risk factors, while individuals with only leg injury and factor V Leiden had only 5 and 6.8-fold higher likelihood, respectively (van Stralen *et al.*, 2008).

Individuals with congestive heart failure (CHF) are known to be more susceptible to thrombosis due to low cardiac output, endothelial dysfunction and increased platelet aggregation. However, the thromboembolic outcome of CHF was formerly overlooked due to the understanding that the primary mortality in CHF is contributed by a sudden cardiac death rather than thrombosis *per se* (Sosin *et al.*, 2003). The role of CHF as an important risk factor for thrombosis was reiterated only after some studies confirmed that CHF patients who receive thromboprophylaxis have better outcomes (less mortality, MI and stroke events) than patients who do not receive the treatments (Cleland *et al.*, 2004; Cokkinos *et al.*, 2006; Massie *et al.*, 2009).

1.2.3 Prevalence

Although heart valve replacement is the main indication for warfarin in other countries (White *et al.*, 1996), warfarin is mainly prescribed for AF in Malaysia. The worldwide prevalence of AF is reported to be 1.5 - 2.0% (Camm *et al.*, 2012). According to a study conducted in an urban hospital in Malaysia, 2.8% from overall acute medication prescription was for patients with AF, while 20% of AF patients were on warfarin treatment (Freestone *et al.*, 2003). However, oral anticoagulant use among AF patients in Malaysia is lower than that in the United States (65.0%) (Kirley *et al.*, 2012) and Europe nations (64.8%) (Pisters *et al.*, 2010). Nevertheless, warfarin remains the top-ranking antithrombotic drug in Malaysia just after aspirin, ticlopidine and clopidogrel (MOH, 2013b). Furthermore, although adverse drug reactions from warfarin use in Malaysia is not extensively reported, it cannot be denied that warfarin is the top-10 leading drugs which cause adverse effects in United States (Wysowski *et al.*, 2007) with the incidence of serious bleeding among patients on warfarin treatment to be as high as 16% while 2.9% was reported to be fatal (Da Silva and Sobel, 2002).

1.3 Warfarin

1.3.1 History

In the early 1920s, a group of farmers in North America reported a strange fatal haemorrhagic disease seen among their cattle following consumption of the molded sweet clover (*Melilotus officinalis*) hay (Schofield, 1924). After an investigation, a veterinarian named Roderick found that the sweet clover contains an unknown anticoagulant which caused 'plasma prothrombin defect' (Roderick, 1929). In 1933, Karl P. Link began an investigation to identify the type of the agent present in the sweet clover. Six years later, his co-workers successfully isolated the agent and began to synthesise it. The anticoagulant was named as dicoumarol (Stahmann *et al.*, 1940; Link, 1959) which inhibits prothrombin, a clotting factor in human that plays a main role in the coagulation cascade (Overman *et al.*, 1941).

In 1948, Link introduced a potent analogue of dicoumarol, named warfarin, as a commercial rodenticide (Last, 2002). Due to its better potency than dicoumarol, warfarin was later proposed as a prophylaxis drug for thromboembolism instead of dicoumarol. In 1951, a US Army inductee used the rodenticide warfarin in an attempt to commit suicide. However, the toxicity effect was not fast enough to kill him instantly and he was successfully rescued from fatal haemorrhage after being given vitamin K as an antidote. This fateful event convinced clinicians that warfarin is indeed a potent anticoagulant with a reliable safety index (Link, 1959). Eventually, warfarin was marketed as Coumadin Sodium in 1954 to replace dicoumarol as an oral anticoagulant.

1.3.2 Indication and dosing

Warfarin is used as a prophylaxis for both arterial and venous thromboembolic disorders. Patients who have arterial embolism, AF, coagulopathy, DVT, heart valve replacement, MI with risk of stroke, PE, pulmonary hypertension and transient ischaemic attack can be given warfarin treatment (MOH, 2010; FDA, 2014).

Warfarin is contraindicated in patients a) who are pregnant or may become pregnant b) who recently or are planned for surgery c) who experience threatened abortion d) who potentially not compliant [due to senility, alcoholism or psychosis] and d) who are recently or planned for spinal puncture (FDA, 2014).

The decision to prescribe warfarin or otherwise is decided by clinician by assessing the following bleeding risks (MOH, 2010): age \geq 65 years, history of stroke, history of gastrointestinal bleeding, recent MI, haematocrit level ($<30\%$), creatinine level (>133 $\mu\text{mol/L}$) and diabetes.

Usually, warfarin is administered to a patient based on an individualised dose. The initial dose is usually 5 mg o.d., or 3 mg o.d. in elderly patients, while the subsequent dosage from day-3 onwards are adjusted based on International Normalised Ratio (INR), an index obtained from laboratory test by using patient's plasma sample.

$$\text{INR} = \left(\frac{\text{PT}}{\text{MNPT}} \right)^{\text{ISI}} \quad (\text{Le } et \text{ al.}, 1994)$$

PT	= Prothrombin time measured from patient's plasma
MNPT	= Mean normal prothrombin time, measured from a pooled plasma of healthy individuals
ISI	= International sensitivity index, a coefficient used to measure the sensitivity of thromboplastin provided by the reagent's manufacturer.

Patients on warfarin treatment are expected to achieve a targeted INR (Table 1.2) (MOH, 2013a). An INR below the recommended range indicates that the patient receives insufficient anticoagulation and therefore warfarin dose should be increased. An INR above the recommended range indicates that the patient has received excessive anticoagulation and therefore warfarin dose should be decreased. Once the INR is within the recommended range, the patient is required to visit the clinic monthly in order to determine the INR again and to adjust the dose accordingly. A patient with an INR above 5.0 needs to withhold warfarin immediately and receive vitamin K antidote before restarting the treatment with a lower dose than the previous one (Gallus *et al.*, 2000). Serious bleeding incident suspected due to warfarin treatment in any INR require immediate withholding of warfarin, slow infusion of vitamin K and fresh frozen plasma or prothrombin complex concentrate supplement.

Table 1.2: Recommended INR ranges (MOH, 2010)

Indication	INR
AF	2.0 - 3.0
Bioprosthetic valve replacement	2.0 - 3.0
Mechanical mitral valve replacement	2.5 - 3.5
DVT	2.0 - 3.0
DVT and PE	2.0 - 3.0
High risk surgical patient	2.5 - 3.5

1.3.3 Pharmacokinetics

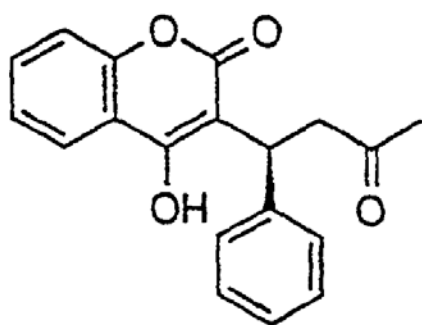
Warfarin is a racemic mixture of two enantiomers: (S)- and (R)-warfarin (Figure 1.1) which have different pharmacokinetics properties. After oral administration, its bioavailability is almost 100%. The maximum plasma concentration is achieved in 4 hr (FDA, 2014). However, the onset of its anticoagulation effect not immediate and is only begins to be observable in 36-72 hr (Lexi-Comp, 2014).

Warfarin is 99% bound to plasma protein, most of which is human serum albumin, while a small fraction binds to human α_1 -acid glycoprotein (AGP), which is also called as orosomucoid (Otagiri *et al.*, 1987). Only 1% of administered warfarin is unbound and manifest its therapeutic effect. The protein-bound warfarin is continuously released into the plasma once the unbound warfarin is depleted (Wilting *et al.*, 1980).

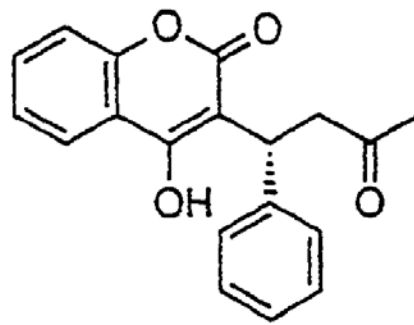
The plasma concentration of (R)-warfarin is 1.5 times higher than the (S)-warfarin at steady state (Osman *et al.*, 2005). However, (S)-warfarin is three to five times more potent than the (R)-warfarin (O'Reilly, 1974). The relatively small volume of distribution of warfarin (0.14 L/kg) (FDA, 2014) conforms with the fact that it is highly plasma protein-bound and is not extensively distributed into other tissues such as muscles or fats.

Warfarin is metabolised by hepatic cytochrome P450 isoenzymes (CYP). Metabolism of warfarin is stereoselective, where in phase I metabolism (R)-warfarin is metabolised by CYP1A2, CYP3A4, CYP2C8 and CYP2C19 isoenzymes, while (S)-warfarin is predominantly metabolised by CYP2C9 isoenzyme (Limdi and Veenstra, 2008). Phase II metabolism of warfarin metabolites is by glucuronidation and sulphonation (Jansing *et al.*, 1992).

Even though (S)-warfarin is more potent than (R)-warfarin, it is eliminated faster than (R)-warfarin [half-life for (S)-warfarin is 29 hr while that for (R)-warfarin is 45 hr]. Elimination of warfarin is mainly through renal excretion (92%), where (S)-warfarin have almost three times faster clearance than (R)-warfarin (Hallak *et al.*, 1993).



(1a)



(1b)

Figure 1.1: (S)-warfarin (1a) and (R)-warfarin (1b) with different orientation of their benzene rings (Li and Robinson, 2001)

1.3.4 Pharmacodynamics

During physiological condition, coagulation occurs when vitamin K-dependent (VKD) clotting factors II, VII, IX and X in the circulation are activated by carboxylation (Figure 1.2). Carboxylation of these VKD clotting factors require vitamin K hydroquinone (reduced vitamin K) as a cofactor. Warfarin however, suppresses the activation of the VKD clotting factors by inhibiting the recycling of vitamin K hydroquinone (reduced vitamin K) from vitamin K epoxide (Fasco and Principe, 1982). The enzyme which is responsible in recycling the reduced vitamin K, vitamin K epoxide (VKOR) is inhibited by both (R)- and (S)-warfarin. However, the latter has higher affinity to VKOR, thus making (S)-warfarin more potent than (R)-warfarin (O'Reilly, 1974). Decrease in activation of VKD clotting factors leads to decreased fibrin formation, therefore reducing the clotting ability of blood.

Each type of activated VKD clotting factors has different half-life before being eliminated (O'Reilly and Aggler, 1968). Clotting factor II has the longest half-life (50 hr). Warfarin's anticoagulation effect will only manifest after all of the activated VKD clotting factors are eliminated from the circulation which explains the slow onset of warfarin after the administration of the first dose. However, large warfarin loading dose is not given to patient because clotting inhibitors protein C and its precursor protein S also require reduced vitamin K for its activation. A sudden decrease in reduced vitamin K can cause warfarin-induced skin necrosis due to the formation of thrombus beneath the skin (Stewart *et al.*, 1999).

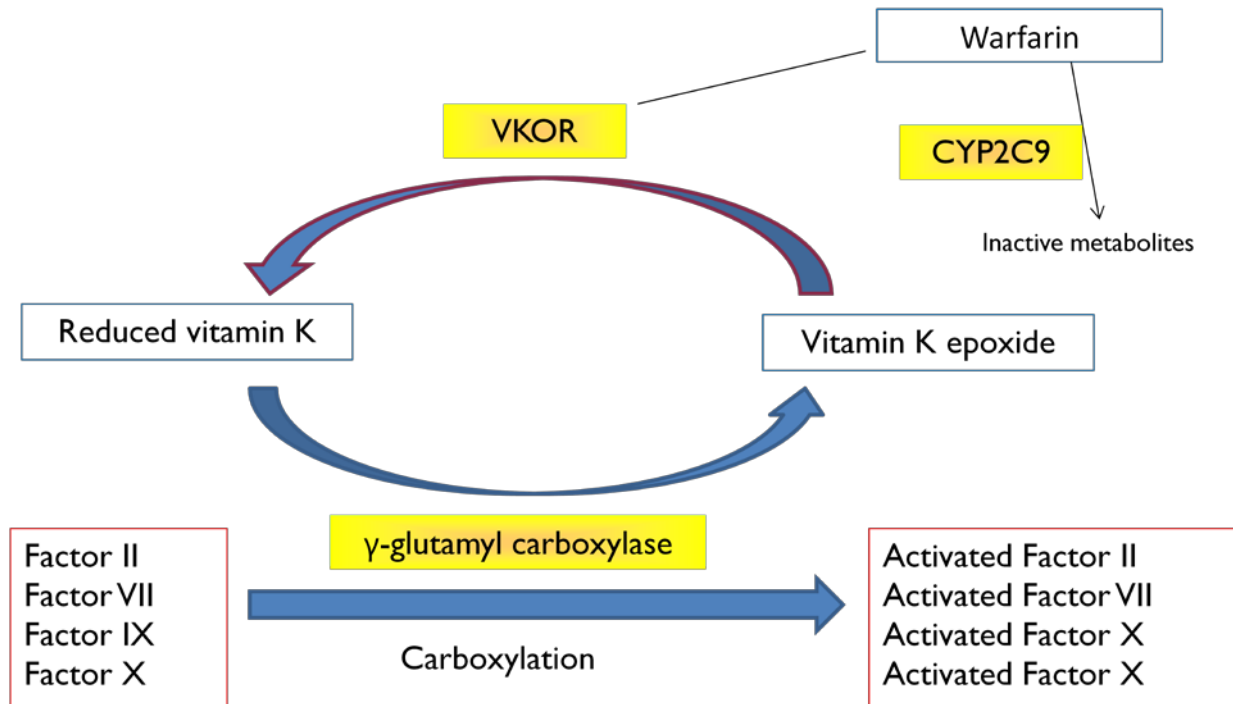


Figure 1.2: Vitamin K cycle and inhibition clotting factors activation by warfarin

1.4 Pharmacogenetics aspects

1.4.1 Cytochrome P450 2C9 genes

Most drugs are metabolised by cytochrome P450 isoenzymes, including warfarin (Kaminsky and Zhang, 1997). Racemic warfarin is metabolised by CYP1A2, CYP2C8, CYP2C9, CYP2C19 and CYP3A4 (Limdi and Veenstra, 2008). The genes that encode for these isoenzymes are polymorphic. Individuals with polymorphic cytochrome P450 gene may have decreased ability to metabolise warfarin and may suffer from adverse drug effect.

Due to the evidences that (S)-warfarin is more potent than (R)-warfarin, most researchers only investigate the gene the encodes for the isoenzyme that metabolise (S)-warfarin, which is *CYP2C9*. *CYP2C9**2 retains approximately 12% of the enzymatic activity of the wild-type variant, while *CYP2C9**3 retains only 5% (Rettie *et al.*, 1994; Haining *et al.*, 1996). Significant association between *CYP2C9**2 and *3 polymorphisms with warfarin's dose requirement and bleeding complication have been reported (Aithal *et al.*, 1999; Higashi *et al.*, 2002; Hillman *et al.*, 2004; Yildirm *et al.*, 2012). Due to the strong findings on the influence of the pharmacogenetics effect of *CYP2C9*, the recommendation to use *CYP2C9* genetic data was integrated into warfarin dosing label by the FDA starting from 2007 (FDA, 2007).

On the other hand, CYP3A4 is the major isoenzyme which metabolises (R)-warfarin. However, a study which investigated the association of *CYP3A4* polymorphisms and the dose requirement for a warfarin analogue (acenocoumarol) failed to establish any significant association (Saraeva *et al.*, 2007). Unlike other cytochrome P450 isoenzymes which metabolise warfarin, CYP4F2 is responsible in metabolising reduced vitamin K (McDonald *et al.*, 2009). Therefore, individuals with *CYP4F2* polymorphism tend to require higher warfarin dose due to high level of vitamin K in their body. There are evidences of association of *CYP4F2* with warfarin's dose requirement (Caldwell *et al.*, 2008; Pautas *et al.*,

2010; Perini *et al.*, 2010). Nevertheless, it was finally concluded that the association is not as clinically important as *CYP2C9* in actual practice (Kringen *et al.*, 2011).

1.4.2 Vitamin K epoxide reductase complex subunit 1

CYP2C9 was generally accepted as the main genetic determinant for the sensitivity to warfarin treatment, until the role of vitamin K epoxide reductase complex-1 gene (*VKORC1*) polymorphism was extensively investigated. The gene itself was relatively newly discovered in 2004 (Li *et al.*, 2004; Rost *et al.*, 2004). Unlike *CYP2C9* whose single nucleotide polymorphisms (SNP) were located at the coding region, the common human *VKORC1* polymorphisms were at the intronic region, thus affecting the expression of *VKORC1* enzyme instead of changing the conformation of the enzyme. Depending on the type of *VKORC1* variant, it may render an individual to be more sensitive or resistant to warfarin treatment (Table 1.3).

Unlike other studies where a single *VKORC1* SNP is reported to be independently correlated to a phenotype (Carlquist *et al.*, 2006; Caldwell *et al.*, 2007), Rieder and colleagues identified 10 SNPs and combined them in a sequence called 'haplotype sequence'. Depending on the type of combinations, the haplotype sequences are designated with different types of 'haplotype identification code': H1, H2, H7 (for low dose requirement), H8 and H9 (for high dose requirement). Due to the fact that human DNA allele is double-stranded, two haplotype identification codes are required to determine the phenotype of an individual (Rieder *et al.*, 2005).

Stratification of warfarin's sensitivity based on the haplotype method is believed to be more accurate than when only a single *VKORC1* SNP is used. However, this fact may not be true in a population where most of the *VKORC1* SNPs are uncommon. It has been suggested that identification of only *VKORC1* 381 alone in an Asian population is sufficient to determine whether an individual is resistant or sensitive to warfarin treatment (Lee *et al.*, 2006). The *VKORC1* 381 alone were also theoretically useful because it is closely linked to

VKORC1 -1639G>A (Rieder *et al.*, 2005), which is the most extensively studied single *VKORC1* genotype (Sconce *et al.*, 2005; Aquilante *et al.*, 2006; Gan *et al.*, 2012). However, a retrospective study which apply this suggestion found that approximately 10% of the study population are still inaccurately dosed (Tham *et al.*, 2006). Therefore, haplotyping method may still be useful to accurately stratify patients sensitivity to warfarin treatment.

In terms of usefulness in predicting sensitivity to warfarin, *VKORC1* is considered a stronger predictor than *CYP2C9*. When combined with other data such as age, weight and *CYP2C9* genotype, *VKORC1* is able to explain as high as 68% of the dose variability (Table 1.4). Along with *CYP2C9**2 and *3, *VKORC1* -1639G>A genotypic data is therefore recommended by the FDA to be used for warfarin's dose determination (FDA, 2007).

Table 1.3: *VKORC1* SNP variants used by Rieder *et al.* (2005) to delineate the haplotype of sensitivity to warfarin treatment

Position	RefSNP	Variant		Variant	
		Nucleotide	Warfarin dose requirement	Nucleotide	Warfarin dose requirement
381	rs7196161	T	High	C	Low
861	rs17880887	C	Low	A	High
2653	rs17881535	G	Low	C	High
3673	rs9923231	G	High	A	Low
5808	rs2884737	T	High	G	Low
6009	rs17708472	C	Low	T	High
6484	rs9934438	C	High	T	Low
6853	rs8050894	G	High	C	Low
7566	rs2359612	C	High	T	Low
9041	rs17880624/ rs7294	G	High	A	Low

RefSNP = reference SNP

Table 1.4: Application of *VKORC1*, other genetic and demographic data and their reliability to explained warfarin dose variability

Investigators	% of dosing variability explained when <i>VKORC1</i> and other predictors were used	% of dose variability explained when <i>CYP2C9</i> alone was used
Rieder <i>et al.</i> (2005)	<i>VKORC1</i> haplotypes: 25%	<i>CYP2C9</i> variants: 10.0%
Bodin <i>et al.</i> (2005)[^]	<i>VKORC1</i> -1639G>A: 50% <i>VKORC1</i> -1639G>A, <i>CYP2C9</i> and body weight: 54%	<i>CYP2C9</i> *3: 14.0%
Sconce <i>et al.</i> (2005)	Age, height, <i>CYP2C9</i> *2 & *3 and <i>VKORC1</i> -1639G>A: 54.2%	<i>CYP2C9</i> variants: 17.5%
Veenstra <i>et al.</i> (2005)	<i>VKORC1</i> genotypes: 31%	<i>CYP2C9</i> variants: 7.9%.
Lee <i>et al.</i> (2006)	<i>VKORC1</i> haplotypes: 30% <i>VKORC1</i> haplotypes, age, <i>CYP2C9</i> *3, gender and race: 48 %	<i>CYP2C9</i> *3: 29.0%
Tham <i>et al.</i> (2006)	Age, weight, <i>CYP2C9</i> *3, <i>VKORC1</i> 381: 60.2%	<i>CYP2C9</i> *3: 17.5%
Caldwell <i>et al.</i> (2007)	<i>VKORC1</i> 6853 (rs 8050894), <i>CYP2C9</i> *2, *3, age, gender, body surface area, history of diabetes, history of heart valve replacement: 56%	<i>CYP2C9</i> variants: 28.2%

[^] The study was to observe the effect of *VKORC1* SNPs on acenocoumarol.

Table 1.4 (Continued)

Investigators	% of dose variability explained when <i>VKORC1</i> and other predictors were used	% of dose variability explained when <i>CYP2C9</i> alone was used
Wadelius <i>et al.</i> (2007)	<i>VKORC1</i> , <i>CYP2C9</i> *2 and *3, <i>PROC</i> , <i>EPHX1</i> , <i>GGCX</i> , <i>ORM1-2</i> , age, body weight and drug interactions: 73%	<i>CYP2C9</i> variants: 15.9%
Gage <i>et al.</i> (2008)	<i>VKORC1</i> -1639, 3730, <i>CYP2C9</i> *2,*3, body surface area, INR, amiodarone, smoker status, age, race, current thrombosis: 53-54%	<i>CYP2C9</i> *3: 33%
IWPC (2009)	Age, height, weight, <i>VKORC1</i> -1639G>A, <i>CYP2C9</i> *2, <i>CYP2C9</i> *3, race, enzyme inducers, amiodarone: 47.0%	Not tested
Lenzini <i>et al.</i> (2010)	Age, INR, <i>VKORC1</i> -1639 G>A, <i>CYP2C9</i> *2, <i>CYP2C9</i> *3, body surface area, target INR, African origin, stroke, diabetes, amiodarone, fluvastatin, dose of warfarin in 2, 3 and 4 days before INR measurement: 43%	Not stated
You <i>et al.</i> (2011)	<i>CYP2C9</i> *3, <i>VKORC1</i> 1173C>T, age, weight and vitamin K intake: 68%	Not stated
Teh <i>et al.</i> (2012)	Age, <i>CYP2C9</i> *3, <i>VKORC1</i> -1639G>A and 1173 C>T: 37%	Not stated

1.4.3 Clotting factor genes

Although there were cases of congenital vitamin K-dependant clotting factor deficiency (VKCFD) which caused bleeding disorder, the decreased levels of these VKD clotting factors are usually not contributed by the mutation of the genes that encode the VKD clotting factors themselves (Oldenburg *et al.*, 2000). However, mutation of clotting factors VII-related genes are reported to decrease the plasmatic clotting factor level in healthy subjects (Bernardi *et al.*, 1997). Mutation of clotting factor IX also have been documented to cause warfarin hypersensitivity in actual clinical cases (Oldenburg *et al.*, 1997; Kristensen, 2002). The occurrence of such clinical cases were however, rare and the correlation study between VKD clotting factors alone and warfarin's dose requirement in large cohort did not indicate any significant contribution to warfarin dose variability (Aquilante *et al.*, 2006). A combination of certain mutations in clotting factors II and VII with *CYP2C9*3* genotypic data is able to explain 50% of the warfarin dose variability in a study cohort (Shikata *et al.*, 2004) but the utility of VKD clotting factor mutation were never proven in an actual warfarin dosing practice.

1.4.4 Apolipoprotein E gene

Vitamin K from food is bound to chylomicron in the blood circulation and then taken up by the liver. The affinity of chylomicron to be uptaken by the liver is influence by apolipoprotein E (APOE) in the chylomicron (Lamon-Fava *et al.*, 1998). However, the gene that encodes for APOE is polymorphic, with three *APOE* variants ($\epsilon 2$, $\epsilon 3$ and $\epsilon 4$) found. APOE receptor on the hepatocyte has an increasing affinity to *APOE* variants in the order of $\epsilon 2 < \epsilon 3 < \epsilon 4$ (Weintraub *et al.*, 1987). Along with *VKORC1*, *APOE* polymorphism may explain up to 57% of warfarin dose variability (Sconce *et al.*, 2006). However, univariate analyses of APOE usually indicates that *APOE* is not significantly associated with warfarin's dose requirement. Nevertheless, the frequency of the *APOE*, especially $\epsilon 4$, is too low for it to be

clinically practical to help in the determination of warfarin's dose requirement (Kohnke *et al.*, 2005; Kimmel *et al.*, 2008; Lal *et al.*, 2008; Huang *et al.*, 2011).

1.4.5 Gamma-glutamyl carboxylase gene

Propeptide VKD clotting factors contain a glutamic acid residue which requires carboxylation into γ -carboxyglutamic acid before they can bind to the vascular surface at the site of injury. The carboxylation process is catalysed by VKD γ -glutamyl carboxylase (Stenflo and Suttie, 1977). The gene that encodes for γ -glutamyl carboxylase (*GGCX*) is polymorphic. Although as many as 37 *GGCX* SNPs have been discovered in an investigation, only a SNP, *GGCX* 1181T>G, is reported to be marginally associated with warfarin's dose requirement and explains only 2% of warfarin dose variability in the study cohort (Rieder *et al.*, 2007) indicating that it is not a polymorphism that should be investigated in our study.

1.4.6 Calumenin gene

VKOR and γ -glutamyl carboxylase are endoplasmic reticulum transmembrane proteins that resided close to each other in order to facilitate the transfer of vitamin K between the two proteins (Carlisle and Suttie, 1980; Tie *et al.*, 2005). The enzymatic activity of both proteins were believed to be regulated by a chaperone protein called calumenin (Wajih *et al.*, 2004). Polymorphism of calumenin gene (*CALU*) lead to overexpression of calumenin and therefore reduce the activity of both enzymes (Voora *et al.*, 2010). However, multiple investigations showed that the polymorphism of *CALU* was just nominally associated with warfarin's dose requirement (Wadelius *et al.*, 2007; Voora *et al.*, 2010; Zohir *et al.*, 2014).